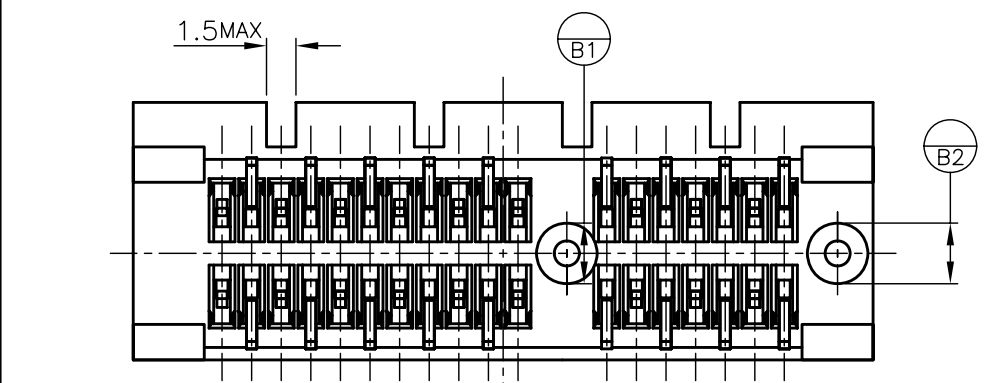
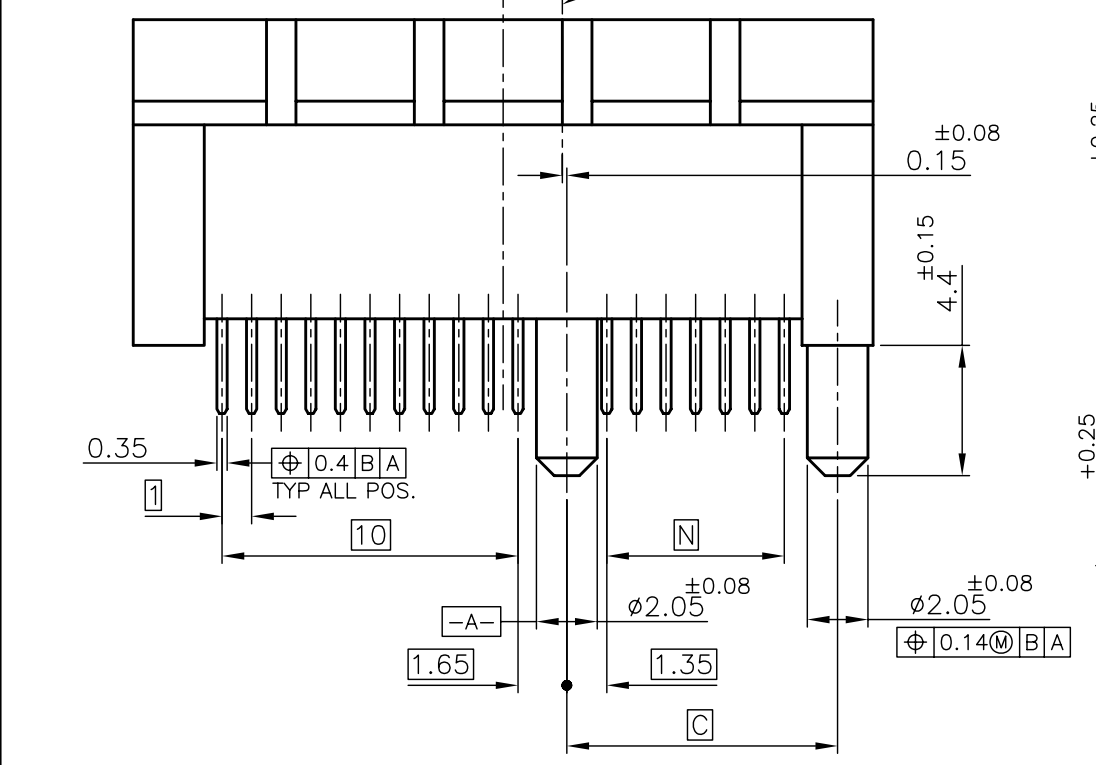
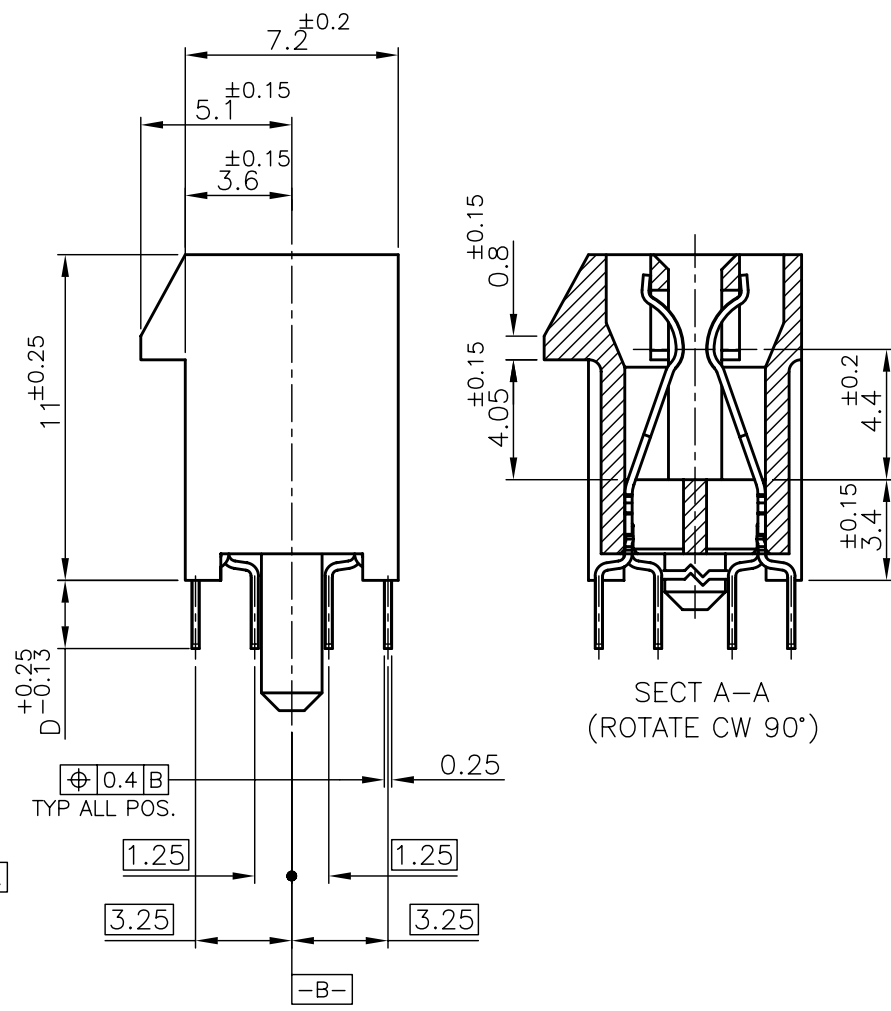
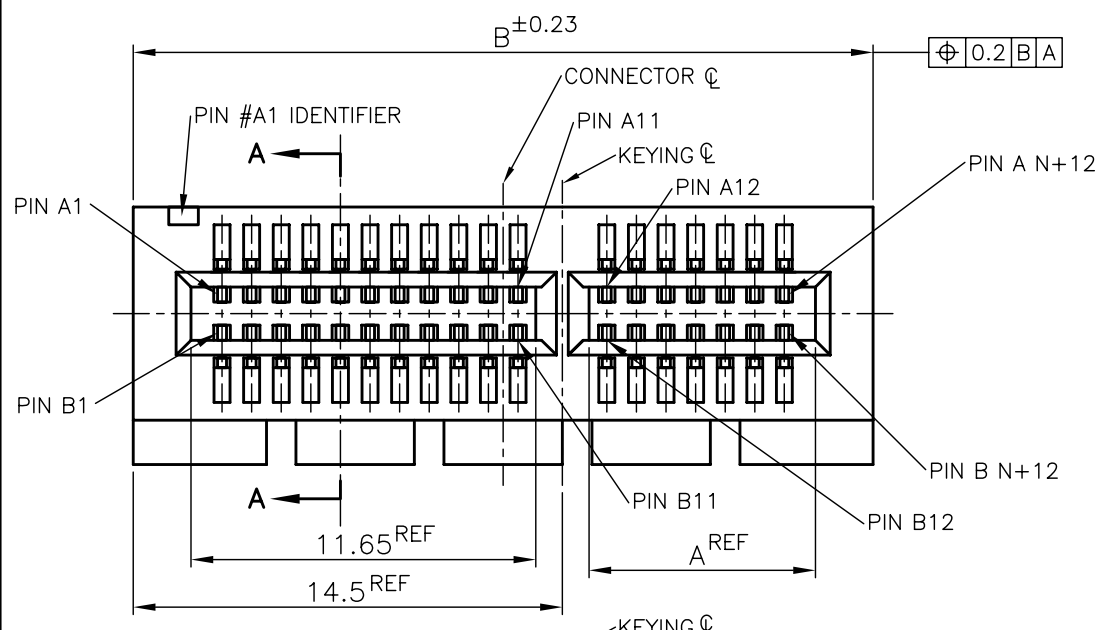


LOC	DIST	REVISIONS			
P	LTR	DESCRIPTION	DATE	DWN	APVD
DW	/	K	REVISED (ECR-08-027874)	04NOV08	B.W W.K

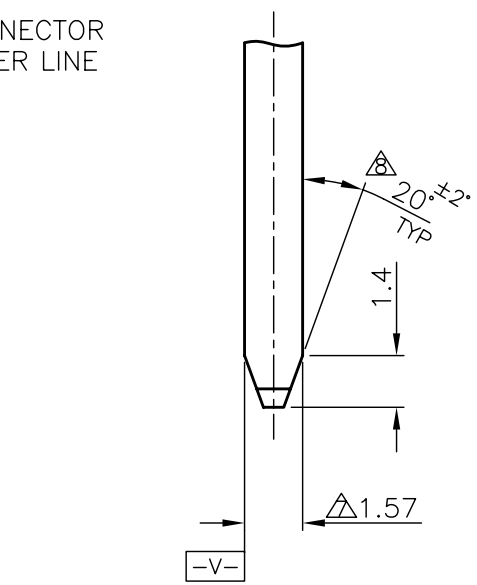
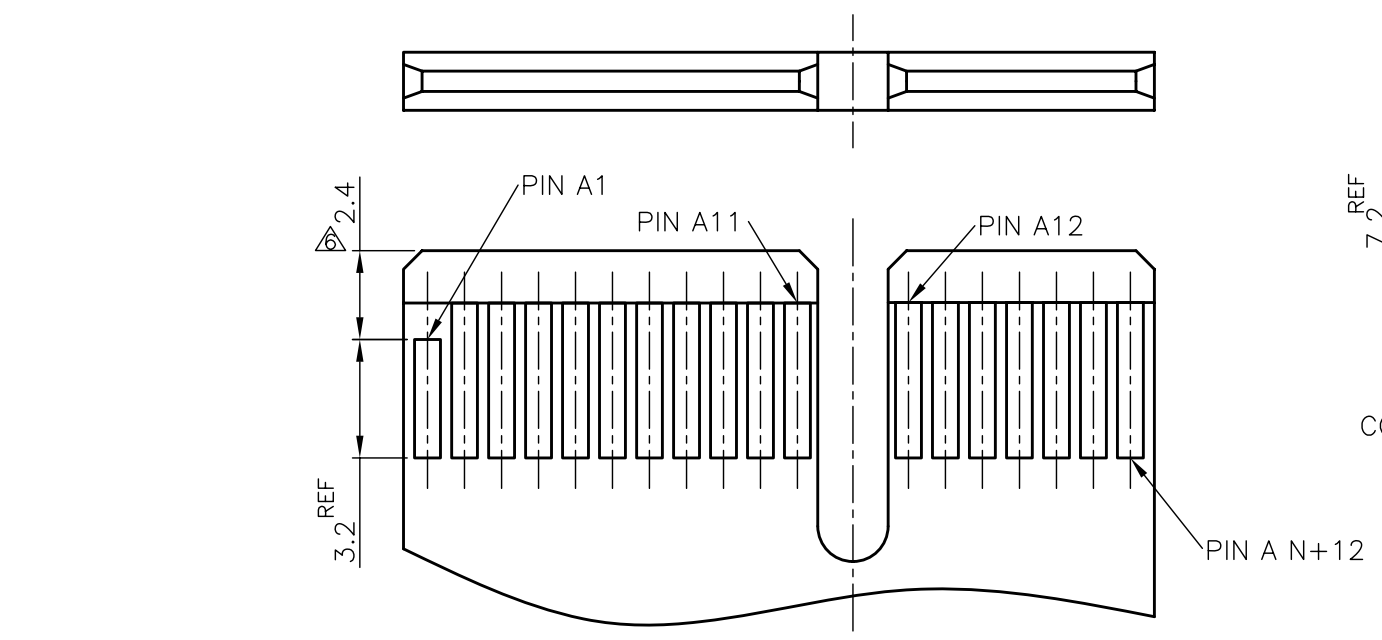
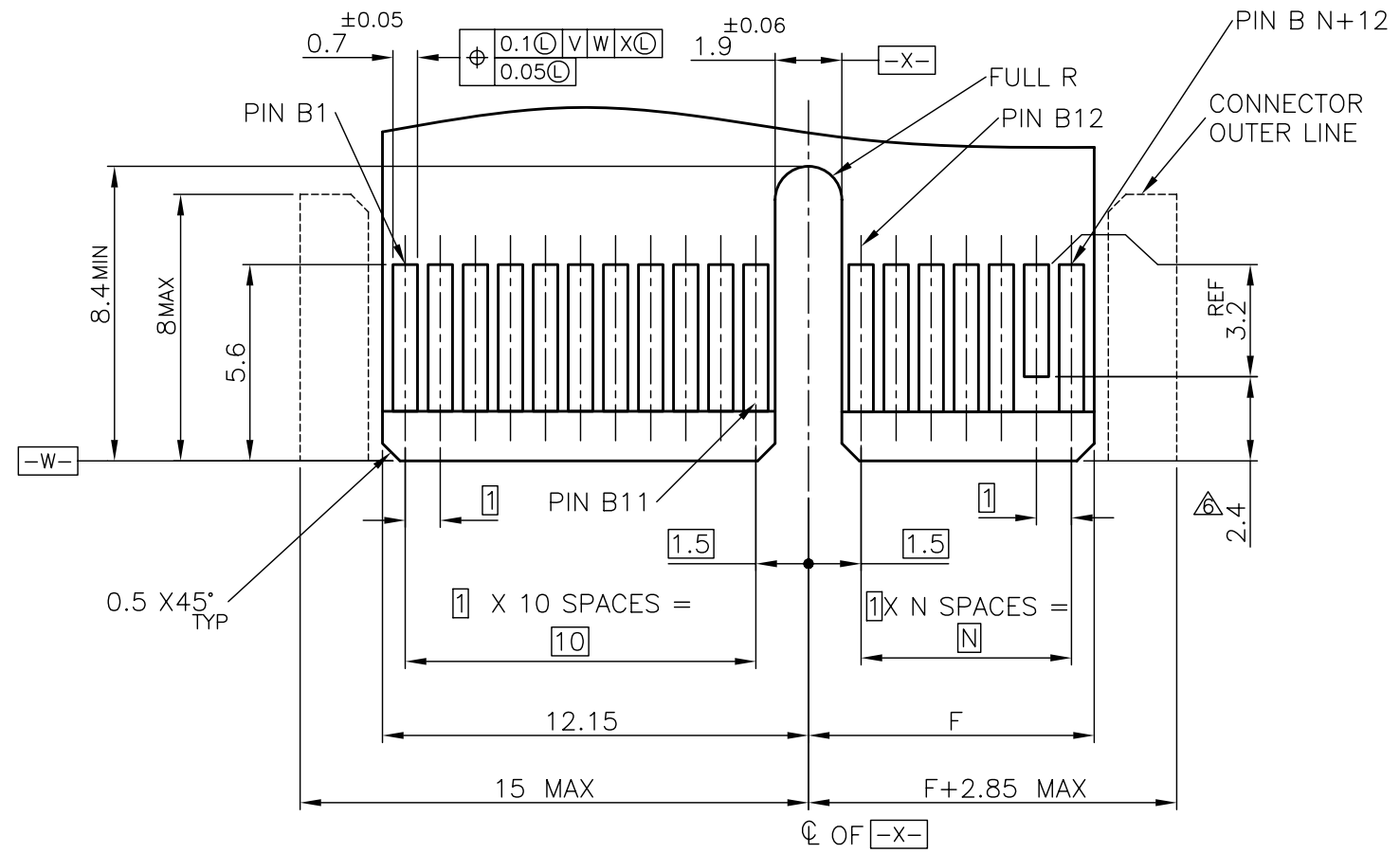
- 1 MATERIAL;
HOUSING: HIGH TEMPERATURE THERMO PLASTIC
UL94V-0, COLOR; BLACK
- 2 CONTACT: COPPER ALLOY
- 3 FINISH;
CONTACT AREA: GOLD PL. 0.05 μm MIN OVER NICKEL PL.
TINE AREA: MATTE TIN PL. OVER NICKEL PL.
- 4 FINISH;
CONTACT AREA: GOLD PL. 0.38 μm MIN OVER NICKEL PL.
TINE AREA: MATTE TIN PL. OVER NICKEL PL.
- 5. CONNECTOR HAS MET THE REQUIREMENTS PER PCI EXPRESS GEN 2 TECHNICAL DOCUMENT.



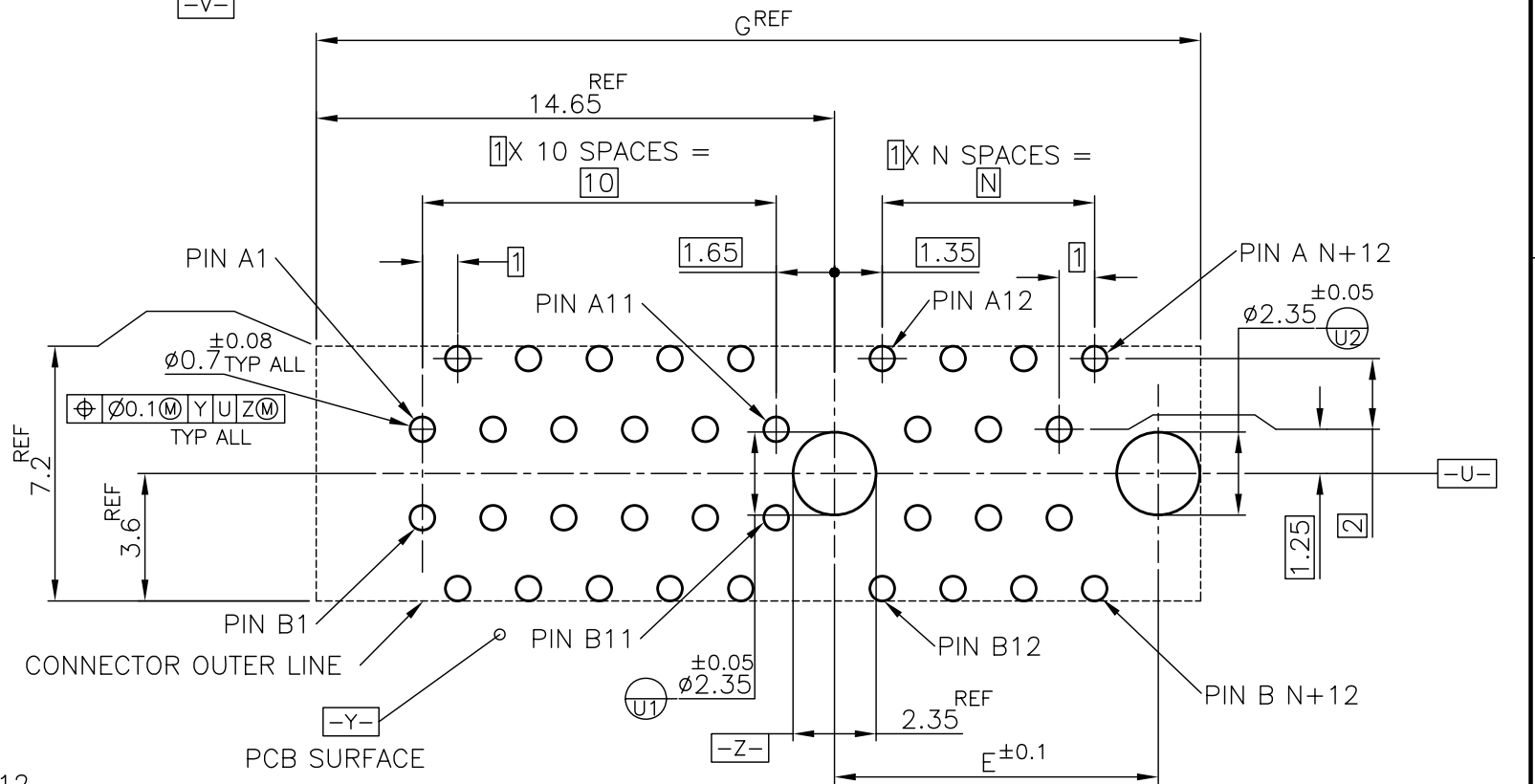
PRODUCING	↑	70	↑	73.15	89	71.65	164	16	8-	↑	-4
PRODUCING	↑	37		40.15	56	38.65	98	8	8-		-3
PRODUCING		20		23.15	39	21.65	64	4	8-		-2
PRODUCING	△	6		9.15	25	7.65	36	1	8-1612163-1		
PRODUCING	↑	70		73.15	89	71.65	164	16	6-	↑	-4
PRODUCING		37		40.15	56	38.65	98	8	6-		-3
PRODUCING		20		23.15	39	21.65	64	4	6-		-2
PRODUCING	△	6	3.56	9.15	25	7.65	36	1	6-1612163-1		
PRODUCING	↑	70		73.15	89	71.65	164	16	5-	↑	-4
PRODUCING		37		40.15	56	38.65	98	8	5-		-3
PRODUCING		20		23.15	39	21.65	64	4	5-		-2
PRODUCING		6	3.1	9.15	25	7.65	36	1	5-1612163-1		
PRODUCING		70	↑	73.15	89	71.65	164	16	4-	↑	-4
PRODUCING		37		40.15	56	38.65	98	8	4-		-3
PRODUCING		20		23.15	39	21.65	64	4	4-		-2
PRODUCING	△	6	2.3	9.15	25	7.65	36	1	4-1612163-1		
PRODUCING	↑	70	↑	73.15	89	71.65	164	16	3-	↑	-4
PRODUCING		37		40.15	56	38.65	98	8	3-		-3
PRODUCING		20		23.15	39	21.65	64	4	3-		-2
PRODUCING		6	3.1	9.15	25	7.65	36	1	3-1612163-1		
PRODUCING		70	↑	73.15	89	71.65	164	16	2-	↑	-4
PRODUCING		37		40.15	56	38.65	98	8	2-		-3
PRODUCING		20		23.15	39	21.65	64	4	2-		-2
PRODUCING	△	6	2.3	9.15	25	7.65	36	1	2-1612163-1		
PRODUCING	↑	70	↑	73.15	89	71.65	164	16	1-	↑	-4
PRODUCING		37		40.15	56	38.65	98	8	1-		-3
PRODUCING		20		23.15	39	21.65	64	4	1-		-2
PRODUCING		6	3.1	9.15	25	7.65	36	1	1-1612163-1		
PRODUCING		70	↑	73.15	89	71.65	164	16		↑	-4
PRODUCING		37		40.15	56	38.65	98	8			-3
PRODUCING		20		23.15	39	21.65	64	4			-2
PRODUCING	△	6	2.3	9.15	25	7.65	36	1			1612163-1
TOOLING STATUS	FINISH	N	D	C	B	A	POS.	PORT	P/N		

THIS DRAWING IS A CONTROLLED DOCUMENT.		DWN K.KOBAYASHI 20FEB03	Tyco Electronics Corporation Taipei, Taiwan	
DIMENSIONS: MM		CHK H.SHIRAI 21FEB03	NAME PCI EXPRESS CARD EDGE CONN. V-TYPE	
TOLERANCES UNLESS OTHERWISE SPECIFIED: 0-PLG ± ±0.3 1-PLG ± ±2 2-PLG ± ± 3-PLG ± ± 4-PLG ± ± ANGLES ± ±		APVD Y.YAMAMOTO 21FEB03	PRODUCT SPEC 108-5847	
MATERIAL △		FINISH SEE TABLE	APPLICATION SPEC	RESTRICTED TO
CUSTOMER DRAWING		WEIGHT	SIZE A3	CAGE CODE 00779
			DRAWING NO C-1612163	SCALE 4:1
			SHEET 1 OF 2	REV K

LOC		DIST		REVISIONS			
DW		P	LTR	DESCRIPTION	DATE	DWN	APVD
				SEE SHEET 1			



- 6 THIS DIMENSION IS ONLY APPLIED TO PRSNT PINS.
- 7 CARD THICKNESS APPLIES ACROSS TABS AND INCLUDES PLATING AND/OR METALIZATION.
- 8 CHAMFER EDGES MUST BE FREE OF CUTTING BURRS.
- 9 NO TIE BAR PERMITTED FROM CARD EDGE TO LEADING EDGE OF PAD FOR PRSNT PIN.
- 10 APPLICATION NOTE;
GOLD CONTACT PAD : ELECTROLESS GOLD PLATING 0.05μm MIN.
OVER ELECTROLESS Ni PLATING 2μm MIN.



PCB PATTERN LAYOUT

MODULE LAYOUT(MATING PART ONLY)

A1,B17,B31,B48,B81	89	72.15	73.15	70	164	16
A1,B17,B31,B48	56	39.15	40.15	37	98	8
A1,B17,B31	39	22.15	23.15	20	64	4
A1,B17	25	8.15	9.15	6	36	1
PRSNT PIN	G	F	E	N	POS.	PORT

THIS DRAWING IS A CONTROLLED DOCUMENT.

DIMENSIONS: MM	TOLERANCES UNLESS OTHERWISE SPECIFIED: 0-PLG ± ±0.13 1-PLG ± ±1 2-PLG ± ± 3-PLG ± ± 4-PLG ± ± ANGLES ± ± FINISH	DWN	Tyco Electronics Tyco Electronics Corporation Taipei, Taiwan
		CHK	
MATERIAL		APVD	NAME
		PRODUCT SPEC	PCI EXPRESS CARD EDGE CONN. V-TYPE
		APPLICATION SPEC	SIZE
		WEIGHT	CAGE CODE
		CUSTOMER DRAWING	DRAWING NO
			RESTRICTED TO
			SCALE
			SHEET
			OF
			REV
			K